



**People  
Potential  
Possibilities**

Social impact reports by

**ConnectMore**  
Solutions Limited  
Insightful evaluations

# **Tackling Homelessness through Street Outreach and Floating Support Services**

## **Social Impact report**



# Introducing P3

We are a charity working with people to change their lives for the better.

During 2024, P3 supported **9,261 people** who were homeless or at risk of becoming homeless.

We typically do this through two different types of services:

**1. Street Outreach Teams** who are skilled at finding and supporting individuals who are homeless. This is often crucial work to help people get the support they need before problems escalate.

**2. Floating Support Teams** otherwise known as 'tenancy sustainment', who help people to manage their own tenancy and avoid the dangers of homelessness.

## The causes of homelessness

Our accumulated experience of delivering these services over the years reveals that **there can be many and varied reasons why people become homeless** or struggle to maintain a tenancy. Some of these reasons could include:

- Eviction
- Substance misuse
- Domestic violence or relationship breakdown
- Learning difficulties
- Unemployment
- Mental health
- Debt

In summary, homelessness is a complex issue influenced by many factors. In recent years the cost of living crisis has made life much harder for many people living on the poverty line in the UK.

An estimated  
354,000 people are  
classed as homeless  
in the UK.

**Source:** Housing Charity Shelter (2024)

# How do P3 help?

Homelessness is a complex issue and so we provide a diverse range of services to help people get back on track.

Helping people navigate and engage with services



Budgeting and welfare rights



Home starter kits



Housing advice



Hospital discharge services



Independent living skills

The demand for our services is growing. During 2024 we provided...

**59,803** street outreach interventions

**77,275** floating support interventions

These intensive sessions were provided to:

**2,840** people experiencing homelessness

**6,421** vulnerably housed people

Outcomes:

**1,560** previously homeless people moved into short term or long term accommodation (street outreach)

**4,452** people reported improvements in their mental wellbeing after receiving support (combined street outreach & floating support)

# Homelessness: Early intervention benefits everybody.

Supporting someone who is homeless is far more expensive than preventing homelessness from occurring. Independent research undertaken by the University of York in partnership with homelessness charity Crisis presents an analysis of the costs of early intervention support versus protracted homelessness over a period of 12 or 24 months.

**Example:** A man in his 30s becomes homeless and after informal arrangements to find accommodation break down, sleeps rough. He has lost this job and is heavily in debt.

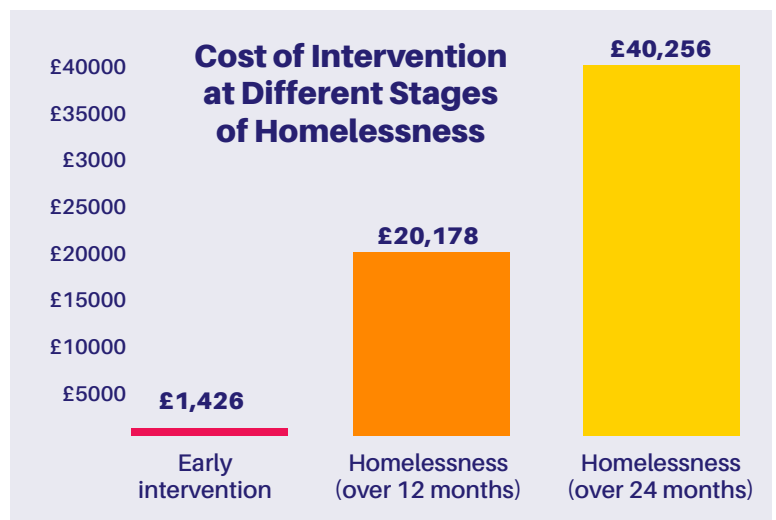
In this example early intervention by Housing Options teams and follow on support by Floating Support teams accrues a cost of £1,426 which in turn proactively reduces the need for relatively more expensive costs that would accrue from demands placed on accident and emergency, hospital stays, anti-social behaviour incidents

This results in additional costs and resource demands for the NHS, Police, social care,

mental health, substance misuse and disruption for individuals and communities.

As the data reveals, a **domino effect occurs when homelessness support services are not properly resourced.**

**Source:** Pleace, J (2015) At what Cost? An estimation of the financial costs of single homelessness in the UK



## How can I support people who are homeless?

The Street Link service can be used by anyone in England and Wales to send an alert about someone who is sleeping or preparing to sleep rough.

Alerts are sent to outreach teams, including those from P3, who go out mostly at night to connect people sleeping rough to local support services.



**Connecting people sleeping rough to local services**

P3 also provide **vital support for people experiencing homelessness upon discharge from hospital.** For example, in Gloucestershire 77 participants were supported upon their discharge from hospital during 2024.

Independent research suggests that when effective care and support is delivered upon discharge, the estimated financial savings to the public purse are £5,200 per patient. In Gloucestershire this would **represent a saving of over £400,000.**

**Source:** Pathway (2024) Intermediate Care for People Experiencing Homelessness: Cost-benefit Analysis

# We deliver Floating Support and Street Outreach Services within the following areas:

## **Cambridgeshire**

- Floating Support and Street Outreach Services

## **Derbyshire**

- Floating Support and Street Outreach Services

## **Gloucestershire**

- Floating Support and Street Outreach Services

## **Stoke on Trent**

- Floating Support Service

## **West London**

- Floating support service operating in Hillingdon

## **Warwickshire**

- Floating Support and Street Outreach Services

## **Wolverhampton**

- Floating Support and Street Outreach Services

## **Yorkshire**

- Floating support services in Calderdale and Rotherham

"A few months ago, I ended up living in my car. I found myself at the darkest point of my life and did ponder on the most painless and effective way to end myself.

What saved me was all the brilliant, caring people at P3. I couldn't find my feet without their kindness and help. Truly, truly appreciated and so glad I'm here to write this from my home."

### **P3 Street Outreach feedback**



## **Come and see for yourself...**

If you would like to see for yourself how street outreach and floating support services are making a difference in your community please get in touch.

[info@p3charity.org](mailto:info@p3charity.org)